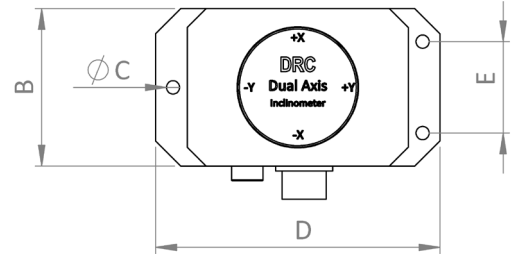
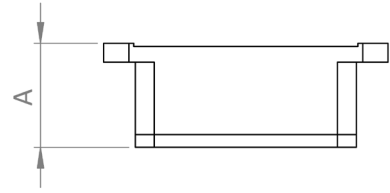


### DIMENSIONS



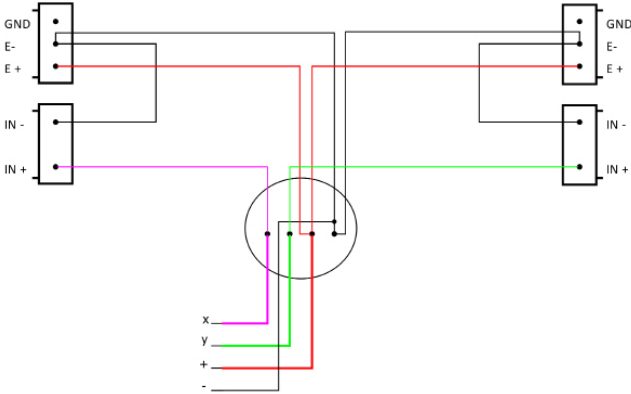
REFERENCE LETTER	DIMENSION VALUE (mm)
A	33
B	50
ØC	4.2
D	90
E	29

### TECHNICAL FEATURES

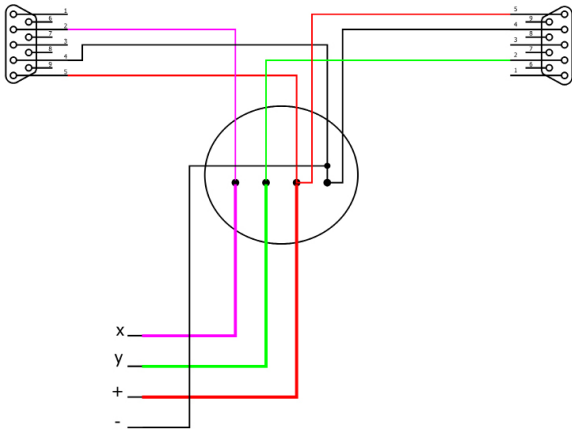
Parameter	Conditions	Model					Unit
		±5	±10	±30	±60	±90	
Measuring range		±5	±10	±30	±60	±90	
Measuring axes		X,Y	X,Y	X,Y	X,Y	X,Y	
Resolution		0.001	0.001	0.001	0.001	0.001	
Absolute accuracy		0.005	0.005	0.01	0.02	0.05	
Long term stability		0.01	0.01	0.02	0.05	0.08	
Zero temperature coefficient	-40÷85°C	±0.002	±0.002	±0.002	±0.002	±0.002	
Sensitivity temperature coefficient	-40÷85°C	≤50		≤50	≤50	≤100	
Power on time		0.5	0.5	0.5	0.5	0.5	
Response time		0.05	0.05	0.05	0.05	0.05	
Output rate		5Hz – 15Hz - 35Hz – 50Hz can be setting					
Output signal		RS232/RS485/RS422/TTL/CAN/MODBUS					
EMC		According to EN61000 and GBT17626					
MTBF		≥50000 hours/time					
Insulation resistance		≥100M					
Shockproof		100g@11ms – 3times/axis (half sinusoid)					
Anti-vibration		100grms - 10÷1000Hz					
Protection glass		IP67					
Cables		Standard 1m length – wearproof – wide temperature Shielded cables 4*0.4 mm2 air-plug connector					
Weight		150 g (without cable)					

Al fine di migliorare le prestazioni tecniche del prodotto, la società si riserva di apportare variazioni senza preavviso.  
In order to improve the technical performances of the product, the company reserves the right to make any change without notice.

### ELECTRICAL CONNECTIONS



Connections for model C with 4-20 mA output



Connections for model T with 0-5 V output

### ORDERING INFORMATION:

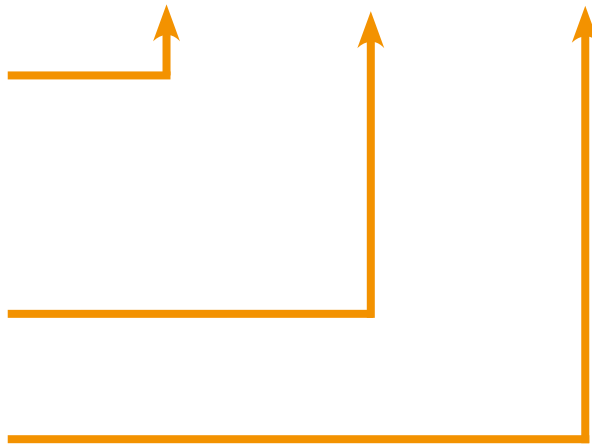
Example: HCAP - 5 - 1AX - T inclinometer

Inclinometer HCAP - 5 - 1AX - T

Range $\pm 5^\circ$	5
Range $\pm 10^\circ$	10
Range $\pm 30^\circ$	30
Range $\pm 60^\circ$	60
Range $\pm 90^\circ$	90

1 axis	1AX
2 axes	2AX

Output 0-5 V	T
Output 4-20 mA	C



Al fine di migliorare le prestazioni tecniche del prodotto, la società si riserva di apportare variazioni senza preavviso.  
In order to improve the technical performances of the product, the company reserves the right to make any change without notice.