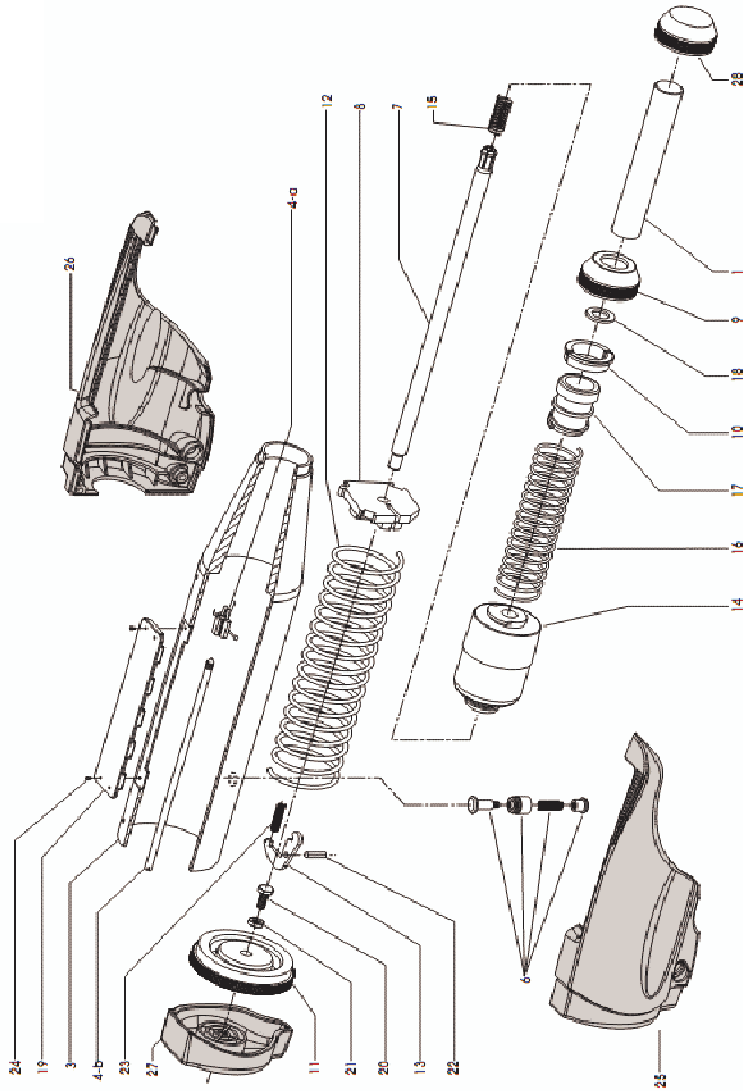


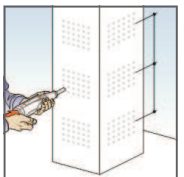
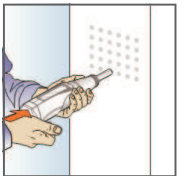
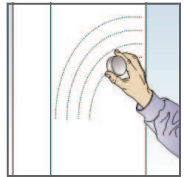
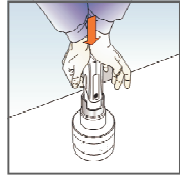
## Exploded View Concrete Test Hammer



Download full Operation Manual is available on [www.drcitalia.net](http://www.drcitalia.net)

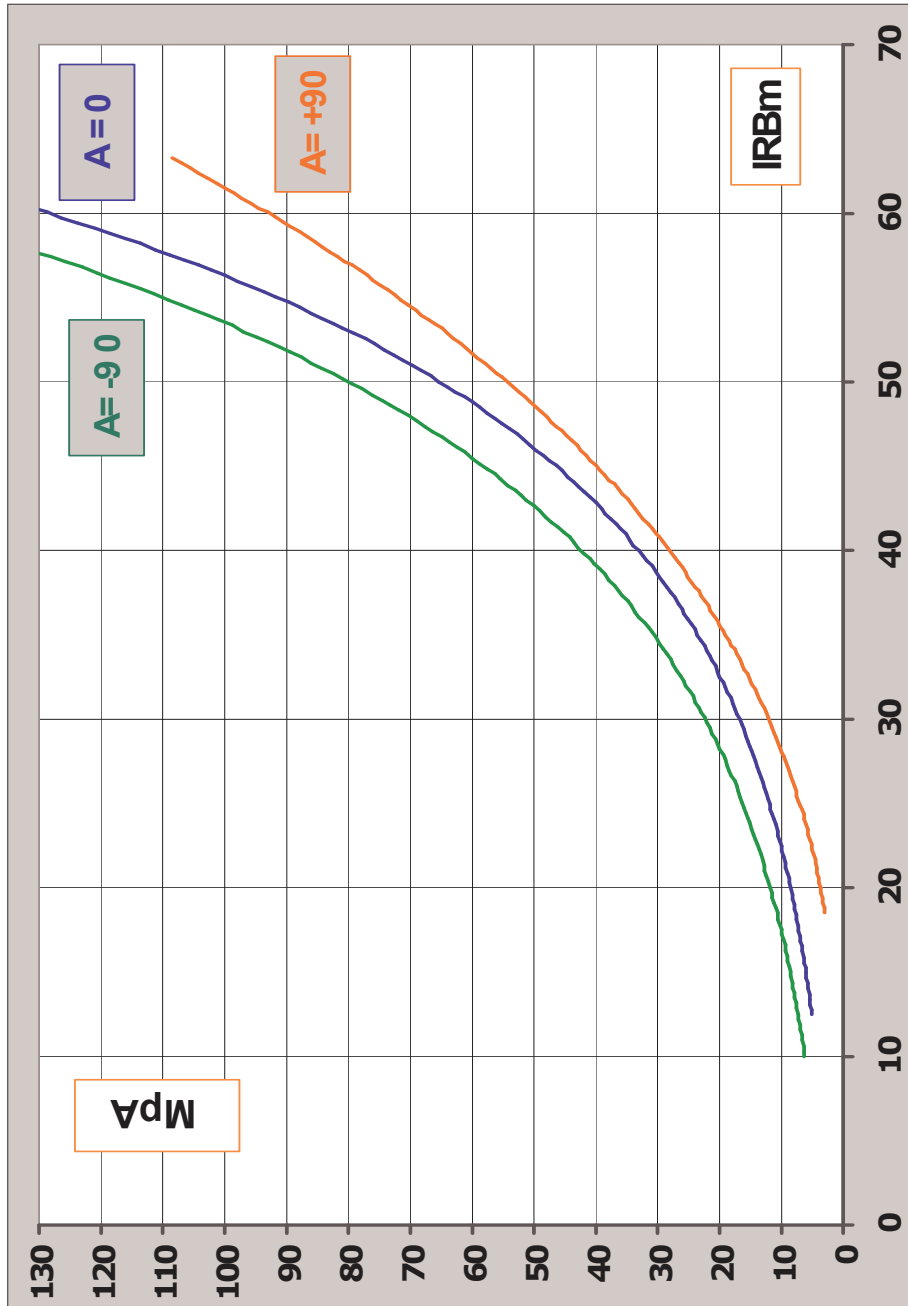
## Quick Tips Concrete Test Hammer

- A** Unscrew the safety cap upon removing the device from its covering.
- B** Lightly push the percussion rod inwards, compressing it towards rigid surface. Instrument is now ready for the test. Insert the sclerometer in the anvil guide ring and carry out a series of strikes to check the calibration.
- C** Rectify the surfaces with rough or tender textures or surfaces with traces or mortar in order to render the surface smooth.
- D** Locate the rebar inside the concrete element before to make a Test. Rebar Locator have to be used.
- E** After make a rebar locator test, drawing a normal line grid in order to facilitate the test. Station-Template is supplied.
- F** Press the instrument against the surface and read the Rebound number on the concrete test hammer. Employ a minimum of 9 measures in order to obtain a reliable estimate index value of surface.
- G** Move again to point C and test another area.



Download full Operation Manual is available on [www.drcitalia.net](http://www.drcitalia.net)

**Correlation Curves**  
Index (IRBm) — Compression Strength (MpA - N/mm<sup>2</sup>)



**Correlation Curves**  
Index (IRBm) — Compression Strength (PSI)

